

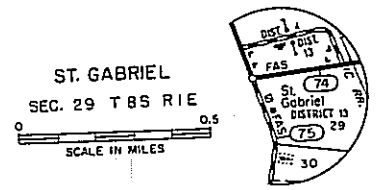
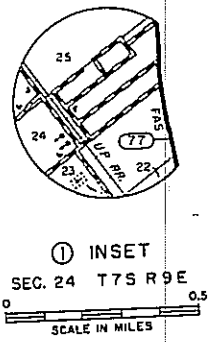
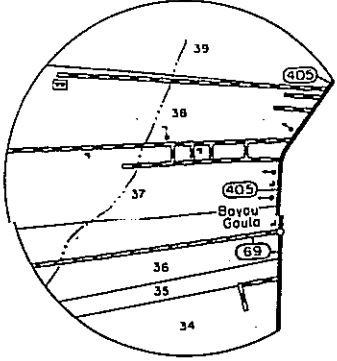
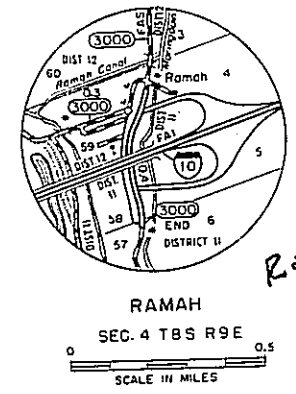
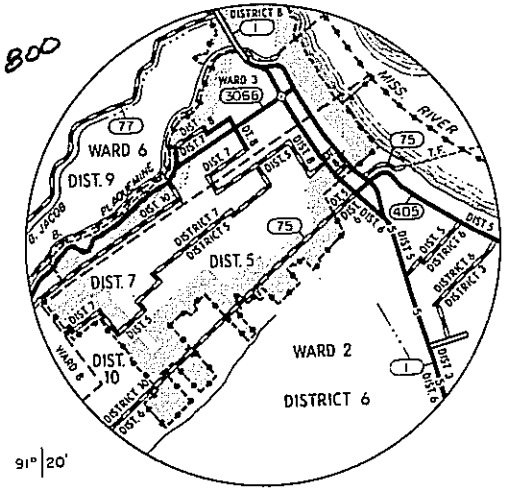
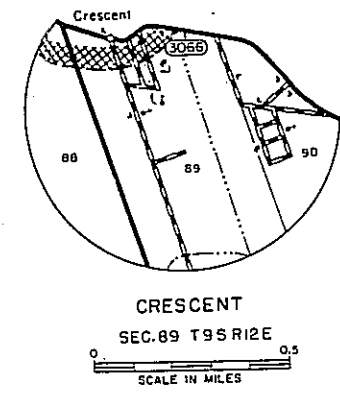
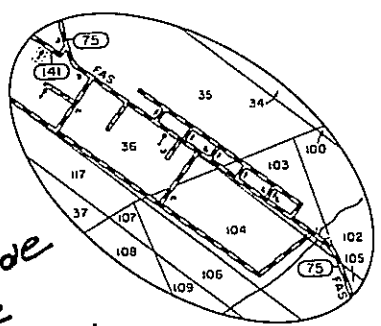


Hwy 975
 Range 14400
 ESN 051
 Direction N/S

Fannie Moe Lane
 Direction E/W
 Range 76600-76800
 ESN 066

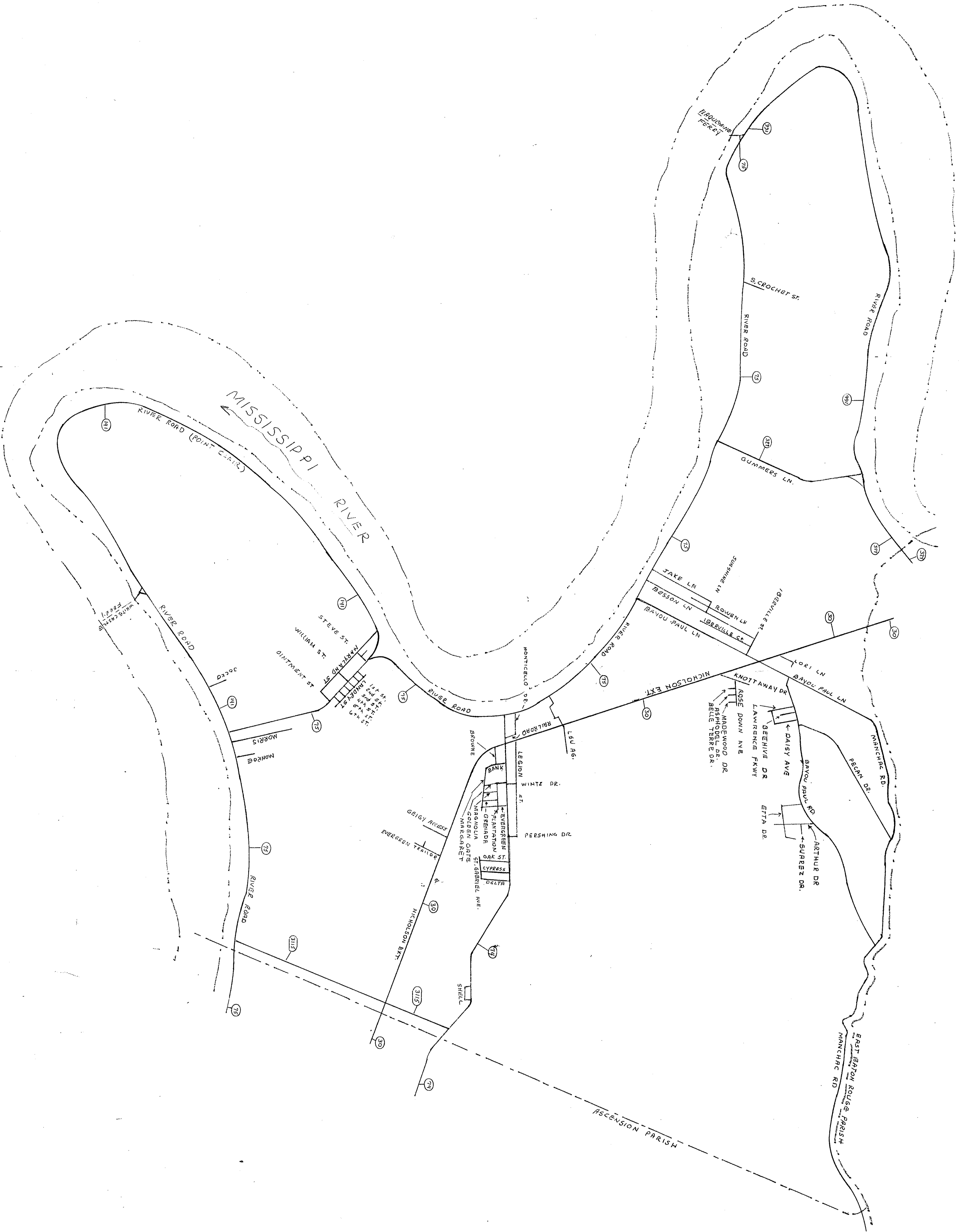
ESN 050
 Range 1300-1339
 Direction N/S
 Agatha St

L&L Road
 Range 64200
 64400
 Direction E/W
 ESN 052



REVISION SCHEDULE	
Basic Information	1990
Surface Types	Jan. 1, 1993

Copies of this map are available for public use at nominal cost. Department of Transportation & Development P. O. Box 94245, Capital Station Baton Rouge, Louisiana 70804-9245



EAST IBERVILLE PARISH
MUNICIPAL ADDRESS

